



What's on in Sapporo?

VOL. 507

HOKKAIDO INTERNATIONAL WOMEN'S ASSOCIATION

APRIL 2017

April Calendar

The Fiscal Year Starts

Most companies and schools have entrance or initiation ceremonies in April, since the fiscal year and school year start this month in Japan. Some may be nervous about their new life but people start it out on a fresh note.

Showa-no-Hi

Showa-no-hi falls on Apr. 29 (Sat./hol.). This national holiday is the birthday of the Showa Emperor (1901-1989). People can have a long holiday combining some national holidays in May and personal holidays. This is called Golden Week. Many people go on a trip during Golden Week.

Hanami

Hanami means to have a picnic while viewing cherry blossoms in full bloom. In Hokkaido, it is very popular to have a barbecue party in the park. The blossoms open first in southern Japan. In Hokkaido, hanami usually starts in early May.

Contents

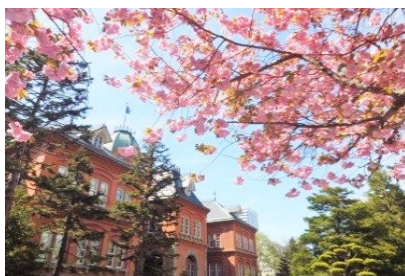
Calendar.....	P.1
Meetings, Plaza News....	P.2
Event Calendar.....	P.2
Events.....	P.3
Movies.....	P.4
Concerts & Museums....	P.5
City Information.....	P.6
Stores & Sports.....	P.7
Flea Markets.....	P.8
Japanese Lessons.....	P.8



Entrance ceremony



Tulips



Cherry blossoms



Golden week

Sapporo's Floral Season

Here are questions frequently asked by overseas visitors from countries such as South Korea, China, Taiwan and Thailand.

What kind of flowers can I see in Sapporo in the spring? Many beautiful flowers burst into bloom all at once in spring. In Sapporo, magnolia, cherry blossoms and plum blossoms bloom throughout the city when the snow melts and it becomes warm. The tulip is also a famous spring flower.

Where and when can I see them? There are popular and scenic parks that are good to see flowers. The public can see cherry blossoms in Maruyama Park (early in May), Japanese plums in Hiraoka Park (early to middle in May) and tulips in Takino Suzuran Hillside National Park (middle in May to early in June). According to the weather forecast, cherry blossoms will start blooming on May 1 (Mon.) and be in full bloom on May 5 (Fri./hol.) this year. Lavender can be enjoyed in July. For more details and access information, check the website, Welcome to Sapporo. <www.welcome.city.sapporo.jp/?lang=en>



Website: <http://kokusai.wix.com/hiwasince75>



<http://facebook.com/WhatsoninSapporo/>

MEETINGS



Hokkaido International Women's Association News

HIWA has been organizing volunteer activities since the association was founded in 1975. The members study and volunteer through the activities below in the hope that they will be useful to the larger community.

Activities: (1) English classes for members (Tue., Wed., and Thu.). (2) Introduction to Japanese culture for non-Japanese people (June). (3) Free Japanese classes for non-Japanese people (Wed.) (4) International lectures & seminars (five times a year.) (5) An annual bazaar for international students (Oct.).

Publication: "What's on in Sapporo?" monthly English newsletter has been published for 42 years since HIWA was established. HIWA always welcomes Japanese and non-Japanese women as members. ●Details: HIWA, Chuo-ku, Kita 1, Nishi 3, MN Bldg., 6F c/o SIS, ☎/fax 221-3501 (Mondays only) or e-mail <hiwa@ivy.ocn.ne.jp> <http://kokusaijosei.wix.com/hiwasince75/>

JALT NEWS

JALT Hokkaido will have a meeting on the topic, "Bringing the World to Otaru: The OUC English Lecture Series." Presenter: Shawn Clankie, a professor of Applied Linguistics at Otaru University of Commerce. Date: Apr. 23 (Sun.), 2-4 p.m. Fee: free for JALT members, ¥500 for non-members. Venue: Otaru University of Commerce Satellite large lecture room, (Chuo-ku, Kita 5, Nishi 5, sapporo 55 Bldg. 3F). ●Info: JALT Hokkaido <https://jalthokkaido.net/>

PLAZA NEWS & INFO



Sapporo International Communication Plaza Foundation (SICPF)

Let's Talk Program: free and open to anyone in the 3F Salon. **Japanese** (every Wed. 2-3:30 p.m.). Practice your Japanese speaking skills with the "Mado" volunteer group.

The following programs are assisted by the International Coordinator for Relations.

English (every Tue. 12:20-1:20 p.m., 4th Tue. 6-7 p.m.).

Chinese (every Mon. 12:20-1:20 p.m., 4th Mon. 6-7 p.m.).

Russian (every Mon. 6-7 p.m.).

German (every Tue. 6-7 p.m.).

Korean (every Wed. 6-7 p.m.), closed until new successor of the International Coordinator for Relations from Korea arrives.

Machinaka Kids' Salon, "Odorinko" is a permanent childcare salon (every Wed., 11 a.m.-4 p.m.). It provides "English Support Day" (3rd Thu. 11 a.m.-2 p.m.). Foreign language volunteers will support in English. Free. No application needed. Address: Chuo-ku, Minami 1, Nishi 4, Sapporo S1 Bldg. 2F. ●Info: Machinaka Kids' Salon "Odorinko," ☎211-5891 or SICPF.

For more information

Call the SICPF at 211-2105. Address: Chuo-ku, Kita 1-jo Nishi 3-chome, MN Bldg. 3F. Communication Salon. Open: Mon.-Sat. 9 a.m.-5:30 p.m. Closed: Sundays and Apr. 29 (Sat./hol.). <plazai@plaza-sapporo.or.jp> <www.plaza-sapporo.or.jp>

APRIL EVENT CALENDAR

SUN	MON	TUE	WED	THU	FRI	SAT
26 April issue appears	27	28	29	30	31	1 April issue appears
2 Light it up Blue (p.3)	3	4	5	6	7	8
9	10	11	12	13	14 PechaKucha Night (p.3)	15 Poetry Reading and Music (p.3) HIS Bazaar (p.3)
16 Chaplin Movies (until May 6, p.3) Poupelle of Chimney Town exhibition (until Apr.30, p.3)	17	18	19	20	21 HIS Music Concert (p.3)	22
23 JALT Meeting (p.2)	24	25	26	27	28 Pixar Adventure (until May 7, p.3)	29 Showa-no-Hi
30						

HIS Spring Bazaar & Concert

Apr. 15

Hokkaido International School (HIS) will hold a spring fundraising bazaar on Apr. 15 (Sat.) from 10 a.m. to 2 p.m. Enjoy a flea market, food and drinks, games and more. Vendors are wanted for the flea market. A vendor space costs ¥1,500 and measures approx. 2 by 1.5 meters. To apply, e-mail at <his.spring.bazaar@gmail.com> or call the number below by Apr. 12 (Wed.). Venue: HIS, 4F Gym (Toyohira-ku, Hiragishi 5-jo 19-chome, 1-55). Access: a 5-minute walk from Sumikawa Subway Sta. (Namboku Line).

Apr. 21

Furthermore, 160 HIS students from kindergarteners to sr. high students will be performing at the "ABC" concert. Proceeds from the concert will be used to enhance the HIS Music Department. Date: Apr. 21 (Fri.), 7 p.m. Venue: Sapporo Concert Hall Kitara, Small Chamber Music Hall (Nakajima-koen 1-15). Tickets: ¥2,000 for adults, ¥1,000 for sr. high and under. ●Info: HIS, ☎816-5000



Living in Sapporo

Welcome to
SAPPORO

Welcome to Sapporo! A handbook "**Living in Sapporo**" is a practical guide for newcomers to everyday life in Sapporo. It has useful information on things like connecting with the community, what to do in an emergency, legal procedures, health care, social welfare, education, child care, public facilities and much more. The handbook is available in English, Chinese, Korean, Russian and Japanese. You can view it on the Web or download it as a PDF file at <<http://www.city.sapporo.jp/city/english/index.html>> or get a free printed copy at the Citizen Registration Section of each ward office. ●Info: International Relations Department, General Affairs Bureau, City of Sapporo, ☎211-2032

PechaKucha Night in Sapporo



Apr. 14

PechaKucha (chit-chat) is a presentation style in which 20 slides are shown for 20 seconds each (6 min. and 40 seconds in total). The format, which keeps presentations concise and fast-paced, powers multiple-speaker events called PechaKucha Nights. PechaKucha Nights are informal and fun gatherings where creative people get together and share their ideas, works, thoughts, holiday snaps in the PechaKucha 20x20 format. The event is now held in over 900 cities worldwide. The 1st PechaKucha Night in Sapporo is scheduled for Apr. 14 (Fri.), 6–8 p.m. Fee: free. Venue: Chobo Gallery, Terrace Keikaku. Address: Chuo-ku, Kita 2, Nishi 4, Akarenga Terrace 5F (change elevators on the 3F). <<http://www.pechakucha.org/cities/sapporo>>

Pixar Adventure

Apr. 28

-May 7

The works of Disney / PIXAR are created from rich imaginations of "What if." **Pixar Adventure** is an experience type event in which visitors can enjoy the attractive world of "What if" by seeing exhibitions of four famous Pixar stories: **Toy Story**, **Monsters, Inc.**, **Cars**, and **Finding Nemo**. Taking photos are allowed at some photo spots. Also, more than 200 kinds of original items such as mugs, bags, key chains, and pouches are available. Fee: ¥1,200 for adults (advance ¥1,000), ¥600 (¥500) for age 4 to elem. schoolers, free for age 3 and under. Date: Apr. 28 (Fri.)–May 7 (Sun.), 10 a.m.–5 p.m. (doors close at 4:30 p.m.). Venue: Sapporo Convention Center (Shiroishi-ku, Higashi-Sapporo 6-jo, 1-1-1). ●Info: PIXAR ADVENTURE Sapporo Kaijo Jikkou-iinkai, ☎272-8658, <http://www.stv.jp/event/pixar_adventure/index.html>



A Picture Book Exhibit

Apr. 16-30

An Original Exhibition, "Poupelle of Chimney Town" will be held at Continental Gallery (Chuo-ku, Minami 1, Nishi 11, Continental Bldg. B1). The works are written by Akihiro Nishino, a popular comedian. Date: Apr. 16 (Sun.)–30 (Sun.), 11 a.m.–7:15 p.m. Tickets: ¥1,000 for adults (advance ¥800), ¥800 for students (¥700). FB <pupell insapporo2017/>

Light it up Blue



Apr. 2

Apr. 2 (Sun.) is the annual "Light it up blue" day when Campaigns for Autism Awareness will be held by worldwide supporters of the movement. In Sapporo, the Sapporo TV Tower, the Clock Tower, and Sunpiazzza 1F, Hikari no Hiroba (Atsubetsu-ku, Atsubetsu-chuo, 2-5) will be lit up in blue on Apr. 2 (Sun.) at 6 p.m. <<http://happy-autism.com/>>

Poetry Reading & Music

Apr. 15

To celebrate the 100th birthday of Dr. Bunichiro Kawamura (1917–2004), a bilingual reading of his poems on a harp, a violin, and a clarinet will be held. He was well-known as a lyricist of a song, "Ballad of Rainbow and Snow" for the 1972 Sapporo Winter Olympics. Date: Apr. 15 (Sat.), 6 p.m. Venue: Sapporo Education and Culture Hall (Chuo-ku, Kita 1, Nishi 13). Tickets: ¥1,000 for adults, ¥500 for elem. and over. ●Info <poetry.sapporo@gmail.com>

Chaplin Movies



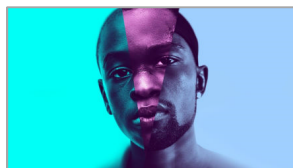
Apr. 16

-May 6

Twelve Chaplin's films including "The Kid" (1921) will be shown at Plaza 2.5 (Chuo-ku, Minami 2, Nishi 5, Tanuki koji 5). Date: Apr. 16 (Sun.), 22 (Sat.), 23 (Sun.), 26 (Wed.)–30 (Sun.), May 3 (Wed.)–6 (Sat.). Hours: 10:30 a.m.–6:30 p.m. Four films each day. Ticket: ¥1,300/film (advance ¥1,000) for adults, ¥800 (¥500) for students. ¥8,000 for 12 films, ¥4,000 for 5 films. ●Info: Cinema Ichibariki, ☎747-7314

Theater Kino <<http://theaterkino.net/sakuhin.html>>

Tel. 231-9355
Chuo-ku, Minami 2, Nishi 6,
Grand Bldg. 2F
(Every Monday: ¥2,000 for 2 people)



Moonlight

MOONLIGHT (R-15)	('16 US)	Mar. 31-
DAVID BOWIE IS	('13 UK)	Apr. 5-7
MY KING (R-15)	('15 France)	Apr. 8-
SACROMONTE, LOS SABIOS DE LA TRIVE	('14 Spain)	Apr. 8-21
ALL GOVERNMENT LIE: TRUTH, DECEPTION, AND THE SPIRIT OF L.F.STONE	('16 Canada)	Apr. 14 only
ZINNIA FLOWER	('15 Taiwan)	Apr. 15-28
EMBRACE OF THE SERPENT	('15 Colombia, Venezuela, Argentina)	Apr. 21 only
GRADUATION	('16 Romania, France, Belgium)	Apr. 22-
THE ACADEMY OF THE MUSES	('15 Spain)	Apr. 22-28
HYOTEKI NO SHIMA KAJI KATAKA	('17 Japan)	Apr. 22-28
CONVERSATION PIECE	('74 Italy, France)	Apr. 22-May 4
THE FIRST MONDAY IN MAY	('16 US)	Apr. 29-
LIFE, ANIMATED	('16 US)	Apr. 29-

Dinos Cinema Sapporo Gekijo <<http://cinema.sugai-dinos.jp/pc/sapporo/>>

Tel. 221-3802
Chuo-ku, Minami 3, Nishi 1,
Sugai Bldg. 7F, 8F
(Every Monday: ¥1,000 for members)
(Every day's first and late shows: ¥1,200)

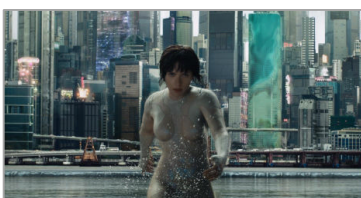


Perfetti Sconosciuti

MOONLIGHT (R-15)	('16 US)	Mar. 31-
TRAINWRECK (R-15)	('15 US)	Apr. 1-14
HARAHARA NANOKA	('17 Japan)	Apr. 1-
HARDCORE HENRY (R-15)	('16 Russia, US)	Apr. 1-
A BRIGHTER SUMMER DAY (PG-12)	('91 Taiwan)	Apr. 8-
THE PURGE: ELECTION YEAR (R-15)	('16 US)	Apr. 14-
HEADSHOT (R-15)	('16 Indonesia, Japan, Singapore)	Apr. 15-28
YUKI YUNA WA YUSHA DEARU 2	('17 Japan, animation)	Apr. 15-
THE TAKE (PG-12)	('15 France, US)	Apr. 15-
BLUE HEARTS GA KIKOERU	('17 Japan)	Apr. 22-
COSMETIC WARS	('17 Japan)	Apr. 22-
PERFETTI SCONOSCIUTI	('16 Italy)	Apr. 22-
NEVER SAID GOODBYE	('16 China)	Apr. 22-May 5
FREE FIRE	('16 UK, France)	Apr. 29-
TAXI	('15 Iran)	Apr. 29-
THE THIRD WAY OF LOVE	('16 China)	Apr. 29-

United Cinemas Sapporo <<http://www.unitedcinemas.jp/sapporo/index.html>>

Tel. 0570-78-3011
Chuo-ku, Kita 1, Higashi 4,
Sapporo Factory 1-jo-kan 2F
(IMAX 2D: ¥2,000, IMAX 3D: ¥2,300)



Ghost in The Shell

THE LEGO BATMAN MOVIE (dubbed in Japanese)	('17 US, animation)	Apr. 1-
GHOST IN THE SHELL (IMAX3D, 4DX)	('17 US)	Apr. 7-
LION	('16 Australia)	Apr. 7-
KUMAKAWA TETSUYA K-BALLET COMPANY 'LA BAYADERE'	('17 Japan, ¥2,500)	Apr. 8-21
SHUNKASHUTO MONOGATARI	('17 Japan)	Apr. 8-20
THE GREAT WALL (IMAX3D, 4DX3D)	('16 China, US)	Apr. 14-
CRAYON SHIN CHAN SHURAI!! UCHUJIN SHIRIRI	('17 Japan, animation)	Apr. 15-
DETECTIVE CONAN: CRIMSON LOVE LETTER	('17 Japan, animation)	Apr. 15-
RELIFE	('17 Japan)	Apr. 15-
BOLSHOI BALLET IN CINEMA 'A HIRO OF OUR TIME'	('17 Russia, ¥3,000)	Apr. 19, 7:30 pm
BEAUTY AND THE BEAST (IMAX, 4DX)	('17 US)	Apr. 21-
DEEPWATER HORIZON	('16 US)	Apr. 21-
MARCH COMES IN LIKE A LION LAST PART	('17 Japan)	Apr. 22-
THE FATE OF THE FURIOUS (IMAX)	('17 US)	Apr. 28-
MUGEN NO JUNIN (PG-12)	('17 Japan)	Apr. 29-
TEIICHI NO KUNI	('17 Japan)	Apr. 29-

Sapporo Cinema Frontier <<http://www.cinemafrontier.net/cgi-bin/pc/index.cgi>>

Tel. 209-5400
Chuo-ku, Kita 5, Nishi 2,
JR Tower Stellar Place 7F



Lion

CAPTAIN FANTASTIC (PG-12)	('16 US)	Apr. 1-
ANKOKU JOSHI	('16 Japan)	Apr. 1-
THE LEGO BATMAN MOVIE	('17 US, animation)	Apr. 1-
GHOST IN THE SHELL	('17 US)	Apr. 7-
LION	('16 Australia)	Apr. 7-
YORU WA MIJIKASHI ARUKEYO OTOME	('17 Japan, animation)	Apr. 7-
T2 TRAINSPOTTING (R-15)	('17 UK)	Apr. 8-
THE GREAT WALL	('16 China, US)	Apr. 14-
CRAYON SHIN CHAN SHURAI!! UCHUJIN SHIRIRI	('17 Japan, animation)	Apr. 15-
DETECTIVE CONAN: CRIMSON LOVE LETTER	('17 Japan, animation)	Apr. 15-
RELIFE	('17 Japan)	Apr. 15-
DEEPWATER HORIZON	('16 US)	Apr. 21-
BEAUTY AND THE BEAST	('17 US)	Apr. 21-
MARCH COMES IN LIKE A LION LAST PART	('17 Japan)	Apr. 22-
THE FATE OF THE FURIOUS (IMAX)	('17 US)	Apr. 28-
MUGEN NO JUNIN (PG-12)	('17 Japan)	Apr. 29-

Movie schedules often change depending on popularity. The movie fee differs by theater. Call the theater for confirmation and details.

CONCERTS

Apr.

Concert schedules are subject to change. Call for confirmation and details.

Sapporo Concert Hall Kitara <<http://www.kitara-sapporo.or.jp>> Chuo-ku, Nakajima Koen 1-15. Tel. 520-2000

Music Concert for Children (Main Hall)

Apr. 1 (Sat.) 2 p.m. ¥2,000 (elem. and over) Free seating ●Info: 612-5935 (Sapporo Tomono-kai)

Atsuko Temma Solo Violin Concert (Main Hall)

Apr. 2 (Sun.) 1:30 p.m. ¥4,000 Reserved seating ●Info: 612-8696 (Office One)

Loginet Japan Charity Concert 2017 (Main Hall)

Apr. 8 (Sat.) 3 p.m. ¥2,500 (S), ¥2,000 (A), ¥1,500 (B) Reserved seating ●Info: 251-4190 (Concert Jimukyoku)

Kitara Lunch Time Concert—Cembalo and Violin (Small Chamber Music Hall)

Apr. 8 (Sat.) 1 p.m. ¥1,500 (adult), ¥500 (U25*) Reserved seating ●Info: 520-2000 (Sapporo Concert Hall)

Toyota Master Players, Wien Premium Concert (Main Hall)

Apr. 24 (Mon.) 7 p.m. ¥6,000 (S), ¥5,000 (A) Reserved seating ●Info: 03-5210-7555 (Toyota Master Players Jimukyoku)

Coro Facile and Chitose Philharmonic Orchestra, Joint Concert III (Main Hall)

Apr. 30 (Sun.) 1:30 p.m. ¥2,000 (adult), free (elem. to sr. high) Free seating ●Info: 0123-28-1554 (Nomura)

* age 25 and under

FUTURE ROCK & OTHER CONCERTS

Rakugo, Kosanji Yanagiya, One Man Show

Apr. 26 (Wed.) 7 p.m. ¥4,400 Reserved seating. Venue: Wakuwaku Holiday Hall (Chuo-ku, Kita 1, Nishi 1)

●Info: 232-3337 (TV Hokkaido)

MUSEUMS

Hokkaidoritsu Kindai Bijutsukan —Hokkaido Museum of Modern Art—

<<http://www.dokyoj.pref.hokkaido.lg.jp/hk/knb/>> Chuo-ku, Kita1, Nishi 17. Tel. 644-6881. Hours: 9:30 a.m.—4:30 p.m.

Closed: Apr. 3, 10–21 and 24.

Special Exhibitions Masterpieces of Ohara Museum of Art II

Apr. 22 (Sat.)–June 11 (Sun.) ¥1,300 (adult), ¥700 (college & sr. high), ¥500 (jr. high), free (elem. and under)

Museum Collection Wonder Museum 2017! Catch the Colors. Selected Pieces for Winter and Spring from Our Collection. Enjoy One Special Piece, The Work of Kanokogi Takeshiro: Nude.

Until Apr. 9 (Sun.), ¥510 (adults) ¥250 (college & sr. high), free (age 65 and over, jr. high and under)

Legendary Artists of 20th Century. Sparkling Light and Colors: Glass from the Otaru Art Base and Our Collection. New Acquisitions. Enjoy One Special Piece, The Work of Emile Gallé: Vase.

Apr. 22 (Sat.)–June 11 (Sun.), ¥510 (adults) ¥250 (college & sr. high), free (age 65 and over, jr. high and under)

Hokkaidoritsu Migishi Kotaro Bijutsukan —Migishi Kotaro Museum of Art, Hokkaido—

<<http://www.dokyoj.pref.hokkaido.lg.jp/hk/mkb/>> Chuo-ku, Kita 2, Nishi 15. Tel. 644-8901. Hours: 9:30 a.m.—4:30 p.m.

Closed: Apr. 1–4, 10, 17–21 and 24.

The Name is Migishi—A Free-spirited Genius

Until Apr. 16 (Sun.) ¥510 (adult), ¥250 (college & sr. high), free (age 65 and over, jr. high and under)

Otaru Art Village Collaborated with mima (Migishi kotaro Museum of Art) Painting Collection—Kotaro Migishi and the Era

Apr. 22 (Sat.)–June 18 (Sun.) ¥510 (adult), ¥250 (college & sr. high), free (age 65 and over, jr. high and under)

Sapporo Geijutsu No Mori Bijutsukan —Sapporo Art Museum—

<<http://sapporo-art-museum.jp/>> Minami-ku, Geijutsu-no-mori 2-75. Tel. 591-0090. Hours: 9:45 a.m.—4:30 p.m.

Closed: Apr. 3, 10, 17 and 24.

Sapporo Art Exhibition—A Trip is fun to reach the destination.

Apr. 8 (Sat.)–May 28 (Sun.) ¥700 (adult), ¥350 (college & sr. high), ¥150 (jr. high & elem.), free (under elem.)

Hokkaido Hakubutsukan —Hokkaido Museum—

<<http://www.hm.pref.hokkaido.lg.jp/>> Atsubetsu-ku, Atsubetsu-cho, Konopporo, 53-2. Tel. 898-0466. Hours: 9:30 a.m.—4 p.m.

Closed: Apr. 3, 10, 17 and 24.

Night Forest—Welcome to the Animal World!

Apr. 28 (Fri.)–June 4 (Sun.) Free

SAPPORO

Sapporo City Call Center

Contact the Sapporo City Call Center (SCCC) daily in English, Chinese, and Korean. Call if you have any questions about daily life, procedures, or municipal facilities. Hours: 8 a.m.–9 p.m. ☎222-4894 <info4894@city.sapporo.jp>

City Website

Japanese, English, Chinese, Korean, and Russian <www.city.sapporo.jp>

E-book

Koho Sapporo (Sapporo City Public Relations Magazine) digital version
<http://www.hokkaido-ebooks.jp/>

News

●Flying Carp Streamers

The 31st Jozankei-onsen Keiryu Koinobori will be held from Apr. 15 (Sat.) to May 7 (Sun.). About 400 carp streamers (*koinobori*) donated by people in Hokkaido will “swim” in the sky over Jozankei Spa. Address: Minami-ku, Jozankei-onsen, Higashi 3. Access: a 45-min. drive from downtown Sapporo.
●Info: Jozankei Kanko Kyokai, ☎598-2012

●Moerenuma Park Events

(1) Rental bicycles are available from Apr. 29 (Sat./hol.) to Nov. 3 (Fri./hol.), 9 a.m.–5 p.m. (until 4 p.m. from Oct. 16). Fee: ¥200–300/2h.
(2) The Sea Fountain will start from Apr. 29 (Sat./hol.) to May 31 (Wed.) at 10:30 a.m., 1:15 p.m., and 4 p.m. (6:30 p.m. on Sat., Sun., & hol. only).
(3) Sakura Tour, walking in the cherry blossom forest among 2,300 cherry trees with a guide on May 3 (Wed./hol.) and 6 (Sat.), 10–11:30 a.m. Capacity: 30 each day. Meeting place: Glass Pyramid. Application: call Moerenuma Park at ☎790-1231 from Apr. 11 (Tue.). Address: Higashi-ku, Moerenuma Koen 1-1,



Leisure & Sports

●Sapporo Sports Day

Public pools, gymnasiums, skating rinks, the Tsudome, health centers, and Miyanosawa Stadium are open to the public. All places are free on May 5 (Fri./hol.). ●Info: Sapporo Kenko Sports Zaidan, ☎530-5905

●Mt. Moiwa Scenic Road



(1) The Scenic Toll Road to the Middle Station will open from Apr. 11 (Tue.) to Nov. 20 (Mon.). Toll: ¥660 for car, ¥320 for two-wheel vehicle. Hours: 10:30 a.m.–9:30 p.m. Parking is free.
(2) The Moiwa Ropeway operation will start its summer time schedule from Apr. 1 (Sat.) to Nov. 20 (Mon.). Hours: 10:30 a.m.–10 p.m. Fee: see the chart below.

Fee for round trip (children)

Ropeway & Morris Car	A→C
¥1,700 (¥850) *	¥1,360
Ropeway only	A→B
¥1,100 (¥550) *	¥880
Morris Car only	B→C
¥600 (¥300) *	¥480

*Fee for age 65 and over. ID needed. Free for elem. students and under.



(3) There are Forest Concerts: folk, classical, and jazz on weekends at the hill-side Sta. Date: Apr. 15 (Sat.), 16 (Sun.), 22 (Sat.), 23 (Sun.) 2–3 p.m., 30 (Sun.) 2:30–4 p.m. ●Info: Mt. Moiwa Ropeway, ☎561-8177

Children

●Maruyama Zoo Events

(1) Closed from Apr. 10 (Mon.) to 14 (Fri.), and 26 (Wed.).
(2) Some events will be held during Golden Week, from May 3 (Wed./hol.) to 7 (Sun.). There will be Anpanman shows, super hero shows, and food stalls.
(3) Parking lot at Bankei Ski Area is available from May 3 (Wed./hol.) to 6 (Sat.). Take a shuttle bus to the zoo. Hours: 9:30 a.m.–4:30 p.m. (Mar.–Oct.), 9:30 a.m.–4 p.m. (Nov.–Feb.). Address: Chuo-ku, Miyagaoka 3-1, ☎621-1426 Adm.: ¥600 for sr. high and over. Free for jr. high and under. Free for Sapporo citizens age 65 and over (ID needed). ¥1,000 for an adult annual pass.

Culture

●Sapporo City Jazz Parade



Sapporo City Jazz will be held at Minami 1-jo Nishi 2-chome and 3-chome from July 2 (Sun.) to 27 (Thu.). The organizer is looking for performers and participants who can play a musical instrument in the parade. Date: July 2 (Sun.), 1–2:30 p.m. Free. Application: visit the website below and fill in the application form from Apr. 15 (Sat.). Capacity: 200. Rehearsal day: June 17 (Sat.). ●Info: Sapporo City Jazz Jikko-iinkai ☎592-4125, <http://Sapporo cityjazz.jp/park-jazz-live/>

●City Hall Lobby Concert



A classical concert by Zenta Yoshiizumi (piano) will be held at City Hall (Chuo-ku, Kita 1, Nishi 2). Date: Apr. 28 (Fri.), 12:25–12:45 p.m. Adm.: free, ☎211-2261

The above information comes from the Sapporo City Public Relations Magazine “Koho Sapporo.”

STORE SALES & EXHIBITS

Apr.

TOKYU

(Chuo-ku, Kita 4-jo, Nishi 2-chome, ☎212-2211)

Open every day, 10 a.m.–8 p.m. (11 a.m.–10:30 p.m. for the 10F restaurants).

9th Fl. (closes at 6 p.m. on the last day)

Apr.13–18 Products Fair from all over Japan

MARUI IMAI (Ichijo Bldg. & Odori Bldg.)

(Chuo-ku, Minami 1-jo, Nishi 2-chome, ☎205-1151)

Open every day, 10 a.m.–7 p.m. (until 7:30 p.m. B2–4F Odori Bldg. and B1–2F Ichijo Bldg.)

Odori Bldg. 9th Fl. (closes at 6 p.m. on the last day)

Apr.12–17 Japanese Crafts Fair

DAIMARU SAPPORO

(Chuo-ku, Kita 5-jo Nishi 4-chome, ☎828-1111)

Open every day, 10 a.m.–8 p.m. (11 a.m.–10 p.m. for the 8F restaurants) Apr. 28 (Fri.)–29 (Sat./hol.) 10 a.m.–8:30 p.m.

7th Fl. (closes at 5 p.m. on the last day)

Apr. 26–May 5 Orsay Museum “Re-master Art” Exhibition

Fee: ¥1,000 for adults & college,
¥800 for sr. & jr. high

MITSUKOSHI

(Chuo-ku, Minami 1-jo Nishi 3-chome, ☎271-3311)

Open every day, 10 a.m.–7 p.m. (until 7:30 p.m. B1 and B2).

Closed on Apr. 10 (Mon.).

10th Fl.

Apr. 11–18 Italian Fair

This Month's Special Sitatte Sapporo



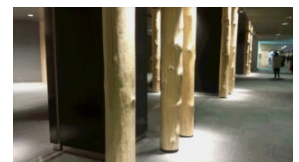
Sitatte Sapporo is the name of the newly rebuilt Fukoku Seimei Koshiyama Building on Ekimae street (4-chome), which opened on Mar. 4 (Sat.). It means “sit” and “atte” (meet). The building has 13 stories and is connected to Sapporo Ekimae-dori Underground Walkway exit #3. The entrance space called “Step Garden” has trees and wooden stairs, which people can sit on drinking coffee. There is a natural deli restaurant (open: 10 a.m.-), a Japanese restaurant, a Chinese restaurant (11 a.m.-), a docomo shop, and a coffee shop (7:30 a.m.-) in the basement. On the 1st floor there is a rice ball shop (8:30 a.m.-), a Japanese restaurant, a G-shock store, and a Kinki Nippon Tourist travel agency. On the 2nd floor, there is a seafood restaurant, an *izakaya* from Kyushu, a restaurant from Hakodate, and an Italian bar.

Address: Chuo-ku, Kita 2-jo Nishi 3-chome 1-7

<<http://sitatte.jp/index.html>>



Arinko onigiri



Entrance in the basement



WHAT'S ON IN SPORTS



Hokkaido Nippon-Ham Fighters Home Games

Date & Time

VS

Apr. 1 (Sat.) 2 p.m.	Saitama Seibu Lions
Apr. 2 (Sun.) 2 p.m.	Saitama Seibu Lions
Apr. 11 (Tue.) 6 p.m.	Fukuoka SoftBank Hawks
Apr. 12 (Wed.) 6 p.m.	Fukuoka SoftBank Hawks
Apr. 13 (Thu.) 6 p.m.	Fukuoka SoftBank Hawks
Apr. 29 (Sat./hol.) 2 p.m.	Tohoku Rakuten Eagles
Apr. 30 (Sun.) 2 p.m.	Tohoku Rakuten Eagles

Venue: Sapporo Dome (Toyohira-ku, Hitsujigaoka 1).

Access: a 10-min. walk from Fukuzumi Subway Sta. (Toho Line).

●Info: Hokkaido Nippon-Ham Fighters, ☎857-3939,

<<http://www.fighters.co.jp/>>

Hokkaido Consadole Sapporo Home Games

Date & Time

VS

Apr. 8 (Sat.) 7 p.m.	F.C. Tokyo
Apr. 16 (Sun.) 1 p.m.	Kawasaki Frontale
Apr. 26 (Wed.) 7 p.m.	Omiya Ardija

Venue: Sapporo Dome. See Nippon-Ham Fighters schedule

●Info: Hokkaido Consadole Sapporo, ☎777-5310,

<<http://www.consadole-sapporo.jp/>>

Levanga Hokkaido Home Games National Basketball League of Japan 2017

Date & Time

VS

Apr. 10 (Mon.) 7 p.m.	Akita Northern Happinets
Apr. 11 (Tue.) 7 p.m.	Akita Northern Happinets
Apr. 22 (Sat.) 6 p.m.	Alvark Tokyo
Apr. 23 (Sun.) 2 p.m.	Alvark Tokyo

Venue: Kitayell (Toyohira-ku, Toyohira 5-jo 11-chome 1-1).

Access: directly connected to the Toyohira koen Subway

Sta. (Toho Line). ●Info: Levanga Hokkaido, ☎555-5113,

<<http://www.levanga.com/>>

The Grand Sumo Tournament in Sapporo

The Grand Sumo Tournament in Sapporo will be held on Aug. 19 (Sat.) from 8 a.m. to 2:40 p.m. in Tsudome (Higashi-ku, Sakae-machi 885). Advance tickets are now on sale at ticket offices (¥3,500–40,000).

MARKETS

Flea Markets		Venue and Access
	Apr. 9 (Sun.) & 16 (Sun.) 10 a.m.–2 p.m.	Butsuganji Temple (Chuo-ku, Minami 13-jo Nishi 8-chome, 1-19) a 15-min. walk from Horohira-bashi Subway Sta. (Namboku Line)
	Apr. 23 (Sun.) & 29 (Sat.hol.) 10 a.m.–2 p.m.	Nakajima Park, Jiyu Hiroba (Chuo-ku, Nakajima-koen) a 1-min. walk from Horohira-bashi Subway Sta. (Namboku Line)
hand to heart		
	Apr. 4 (Tue.)–9 (Sun.) 11 a.m.–7 p.m.	Sales of hand-made goods Sapporo Ekimae-dori Underground Walkway Communication Square
Antiques		
	Apr. 4 (Tue.)–10 (Mon.) 10 a.m.–7 p.m.	Sales of tea things, kimono, antiques and more Sapporo Ekimae-dori Underground Walkway
	Apr. 23 (Sun.) 9 a.m.–4 p.m.	Toyohira Shrine (Toyohira-ku, Toyohira 4-jo 13-chome 1-18, on Route 36) an 8-min. walk from Toyohira-koen Subway Sta. (Toho Line)
Art Markets		
	Apr. 2 (Sun.), 15 (Sat.) & 16 (Sun.) 10 a.m.–5 p.m.	Sapporo Factory Atrium (Chuo-ku, Kita 2-jo Higashi 4-chome, 1-2) a 3-min. walk from Bus Center-mae Subway Sta. (Tozai Line)
	Apr. 29 (Sat./hol.) 10 a.m.–4 p.m.	Sapporo Art Park, Art Hall (Minami-ku, Geijutsu-no-mori 2-chome 75) a 15-min. bus ride from Makomanai Subway Sta. (Namboku Line)

JAPANESE LESSONS

Group	Schedule	Fee	Venue	Contact
Manabu (HIWA)	Wed. 10 a.m. – noon (B, E, I) 1–3 p.m. (B, E, I, A)	Free	Kaderu 2.7 8F (Chuo-ku, Kita 2, Nishi 7) Home tutoring is available.	Ms. Kuramoto variri@aol.com
Step-J	Mon. 6:30–8 p.m. (B, E, I) Apr. 3*	¥200/lesson	Sapporo Social Welfare Center (Chuo-ku, Odori Nishi 19)	http://sapporostepj.wix.com/stepj sapporostepj@gmail.com
Welcome House	Tue. & Fri. 10:30 a.m.–noon Apr. 4 (Tue.)* & 7 (Fri.)*	¥1,000/month (once a week)	Welcome House (Chuo-ku, Kita 1, Higashi 6)	☎/fax 222-6766 http://www.welcomehouse.jimdo.com/
Mado	Tue., Thu. & Sat. 1–5 p.m. Apr. 22 (Sat.)* & 29 (Sat./hol.)*	Free	Sapporo International Student Center 2F (Toyohira-ku, Toyohira 6-6)	☎Ms. Uchida 070-6607-3288 http://mado.jpn.org/
SNC	Wed. 10–11:30 a.m. (B, E, I, A) Apr. 5*	¥1,000/month	Sapporo L Plaza 4F (Kita-ku, Kita 8, Nishi 3)	☎ Ms. Tsukuda 643-7612 http://sncnihongo.wixsite.com/snc-nihongo
Tampopo	Fri. 10:30 a.m.–noon (E1) 12:30–2 p.m. (E2) 2:30–4 p.m. (I) Apr. 7*	¥2,500/term (for 13 lessons, includes printed materials) Apr. 14–July 14	Sapporo L Plaza 3F, 4F (Kita-ku, Kita 8, Nishi 3)	☎/fax Ms. Nakajima 892-9560 ☎/fax Ms. Numakura 864-2270 (from 5 p.m.) http://tampothonihongo.blogspot.jp/
J. Works	Sat. 1:30–3 p.m. Apr. 1 Free talk Apr. 15 Enjoy Japanese! Apr. 22 Grammar/Conversation	Free	SIS Office MN Bldg. 6F (Chuo-ku, Kita 1, Nishi 3)	☎Ms. Ichikawa 090-2871-1537 okikaawakihei@gmail.com

Notes: *No lesson B: Beginner E: Elementary I: Intermediate A: Advanced

HIWA Information:

060-0001, Sapporo-shi, Chuo-ku, Kita 1-jo Nishi 3-chome, MN Bldg. 6F c/o SIS

☎221-3501, (Mondays only) <<http://kokusaijosei.wix.com/hiwasince75>>

E-mail <hiwa@ivy.ocn.ne.jp> President: R. Watanabe, Editor: M. Oyama,

Staff writers: A. Akiyama, G. Fujitani, H. Furuya, S. Hakuba, J. Hamilton, Y. Kakuta, C. Kubo, C. Nakamura, Y. Ofuji, M. Sano, K. Tao, M. Yokoyama, A. Yoshida, Y. Zaitzu Proof-readers: M. Ito, S. Kobayashi, M. O'Connell, T. Riggins

Printer: Tsuji Kohansha Co., Ltd. Chuo-ku, Minami 27-jo Nishi 11-chome,

☎561-5252

What's on in Sapporo? welcomes comments and suggestions. All materials for publication in the May issue are due by Apr. 11 (Tue.)

E-mail <miyo-o@kg7.so-net.ne.jp> Include your name and phone number.

The **What's on in Sapporo?** staff take all care but no responsibility for the information contained herein. Any unauthorized copies of this paper are strictly prohibited.

What's on in Sapporo? ©2017 is edited and published monthly by the Hokkaido International Women's Association in cooperation with the Sapporo International Communication Plaza Foundation.